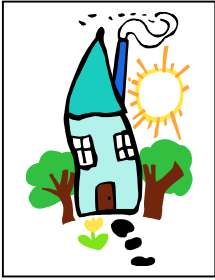


# FREE

## 2026 SPRING RESIDENTIAL CLEANUP



BROUGHT TO YOU BY:

THE CITY OF ABERDEEN  
BROWN COUNTY LANDFILL



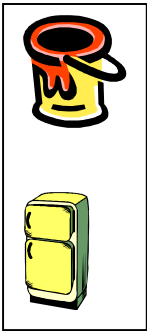
### 2 DROP OFF LOCATIONS BELOW

**APRIL 24th THRU MAY 2nd: LANDFILL**

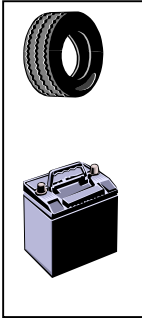
1.



**TIRES (4 Car or Pickup Tire LIMIT)**



PAINT  
TREES  
RUBBLE  
BATTERIES  
FURNITURE  
WASTE OIL  
ELECTRONICS  
APPLIANCES  
SCRAP METAL  
PROPANE TANKS  
GRASS & LEAVES  
OTHER MISC. WASTE



\* **NO LARGE DEMO PROJECTS (HOMES, TREE BELTS ETC...)**  
**NO MOBILE HOMES**  
**NO BUSINESS / COMMERCIAL WASTE (Fees Apply TO THE ABOVE)**

#### HOURS

**MONDAY – SATURDAY: 8 TO 5**  
**SUNDAY: CLOSED**

**APRIL 25th**

2.



**SOUTH 5<sup>TH</sup> STREET**  
**(2 BLKS. S. OF WHITE HOUSE INN)**

**TIRES (4 Car or Pickup Tire LIMIT)**

BATTERIES  
FURNITURE  
APPLIANCES  
ELECTRONICS  
SCRAP METAL  
OTHER MISC. WASTE  
RUBBLE (NO SHINGLES)

\*LARGE LOADS, GRASS, LEAVES, TREES, SHINGLES, PAINT, WASTE OIL,  
PROPANE TANKS & ANTIFREEZE MUST BE BROUGHT TO THE LANDFILL.

#### HOURS

**SATURDAY: 8 TO 5**

**ALL LOADS MUST BE COVERED AND SECURED**

**NO 8<sup>th</sup> Avenue Access: Asphalt Roads ONLY to Landfill**

FOR MORE INFORMATION LOOK US UP ONLINE: @[www.brown.sd.us/landfill/home](http://www.brown.sd.us/landfill/home) or call 626-4019 / 380-0111